

# Lithium 8245



<b>Oil Pattern Distance:</b> 44 Feet	<b>Reverse Brush Drop:</b> 44 Feet	<b>Oil Per Board:</b> 45 uL
<b>Forward Oil Total:</b> 14.31 mL	<b>Reverse Oil Total:</b> 6.795 mL	<b>Volume Oil Total:</b> 21.105 mL
<b>Forward Boards Crossed:</b> 318 Boards	<b>Reverse Boards Crossed:</b> 151 Boards	<b>Total Boards Crossed:</b> 469 Boards

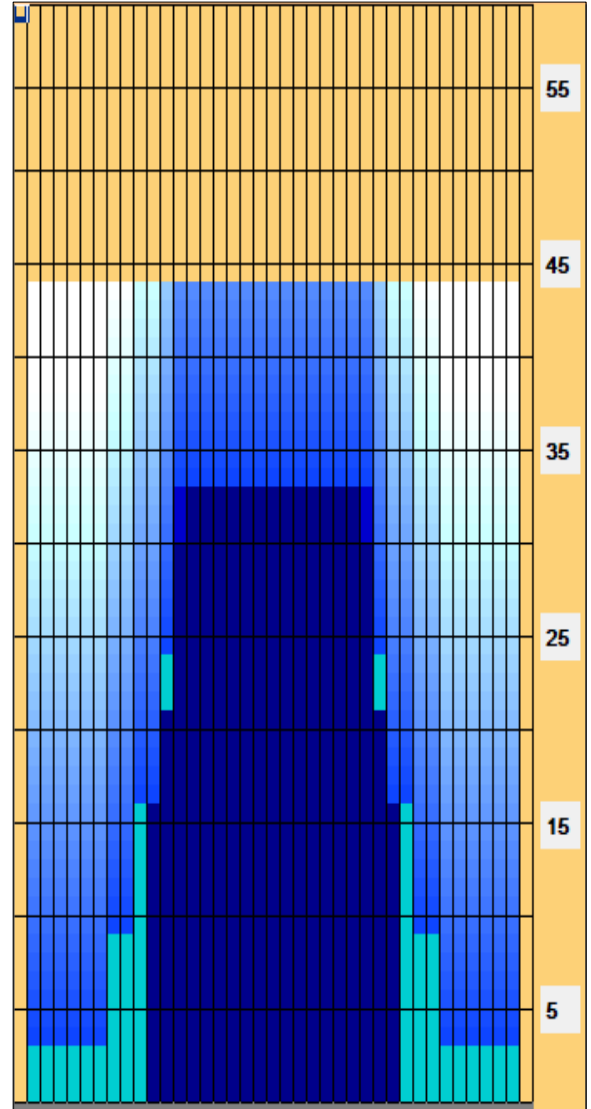
	Start	Stop	Loads	Speed	Crossed	Start	End	Feet	T.Oil
1	2L	2R	3	14	111	0.0	3.9	3.9	4995
2	8L	8R	2	18	50	3.9	9.0	5.1	2250
3	10L	10R	3	18	63	9.0	16.6	7.6	2835
4	12L	12R	3	18	51	16.6	24.2	7.6	2295
5	13L	13R	2	22	30	24.2	30.4	6.2	1350
6	14L	14R	1	22	13	30.4	33.5	3.1	585
7	2L	2R	0	30	0	33.5	44.0	10.5	0

Conditioner:  
Type In or Select One

TransferType:  
Type In or Select One

Forward  
Reverse  
Combined  
Buff

	Start	Stop	Loads	Speed	Crossed	Start	End	Feet	T.Oil
1	2L	2R	0	26	0	44.0	33.0	-11.0	0
2	13L	13R	4	22	60	33.0	20.6	-12.4	2700
3	12L	12R	2	18	34	20.6	15.5	-5.1	1530
4	11L	11R	3	18	57	15.5	7.9	-7.6	2565
5	2L	2R	0	14	0	7.9	0.0	-7.9	0



Item	3L-7L:18L-18R	8L-12L:18L-18R	13L-17L:18L-18R	18L-18R:17R-13R	18L-18R:12R-8R	18L-18R:7R-3R
Description	Outside Track:Middle	Middle Track:Middle	Inside Track:Middle	Middle: Inside Track	Middle:Middle Track	Middle:Outside Track
Track Zone Ratio	7.67	2.56	1.01	1.01	2.56	7.67

