

# Kegel Recreation Series - BOURBON STREET - 6240



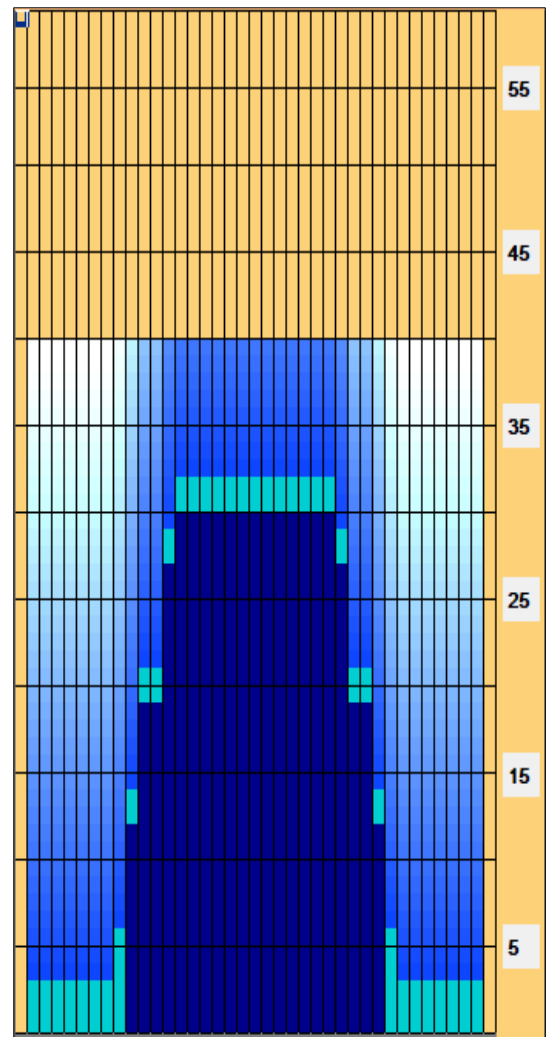
**Oil Pattern Distance:** 40 Feet      **Reverse Brush Drop:** 40 Feet      **Oil Per Board:** 45 uL  
**Forward Oil Total:** 14.04 mL      **Reverse Oil Total:** 7.065 mL      **Volume Oil Total:** 21.105 mL  
**Forward Boards Crossed:** 312 Boards      **Reverse Boards Crossed:** 157 Boards      **Total Boards Crossed:** 469 Boards

	Start	Stop	Loads	Speed	Crossed	Start	End	Feet	T.Oil
1	2L	2R	3	14	111	0.0	3.9	3.9	4995
2	9L	9R	1	18	23	3.9	6.4	2.5	1035
3	10L	10R	3	18	63	6.4	14.0	7.6	2835
4	11L	11R	3	18	57	14.0	21.6	7.6	2565
5	13L	13R	3	18	45	21.6	29.2	7.6	2025
6	14L	14R	1	22	13	29.2	32.3	3.1	585
7	2L	2R	0	22	0	32.3	34.0	1.7	0
8	2L	2R	0	26	0	34.0	40.0	6.0	0

	Start	Stop	Loads	Speed	Crossed	Start	End	Feet	T.Oil
1	2L	2R	0	30	0	40.0	30.0	-10.0	0
2	14L	14R	1	22	13	30.0	26.9	-3.1	585
3	13L	13R	3	18	45	26.9	19.3	-7.6	2025
4	11L	11R	3	18	57	19.3	11.7	-7.6	2565
5	10L	10R	2	14	42	11.7	7.8	-3.9	1890
6	2L	2R	0	10	0	7.8	0.0	-7.8	0

**Conditioner:**  
 Type In or Select One  
  
**TransferType:**  
 Type In or Select One

- Forward
- Reverse
- Combined
- Buff



Lane Machine : Kegel, Kustodian Walker (Transfer Brush) Oil :Kegel Fire  
 Cleaner : Kegel Defence - CLane Surface : Synthetic Pinsetters : GS-98

Item	3L-7L:18L-18R	8L-12L:18L-18R	13L-17L:18L-18R	18L-18R:17R-13R	18L-18R:12R-8R	18L-18R:7R-3R
Description	Outside Track:Middle	Middle Track:Middle	Inside Track:Middle	Middle: Inside Track	Middle:Middle Track	Middle:Outside Track
Track Zone Ratio	7.67	2.5	1.02	1.02	2.5	7.67

