

Program #1 House Pattern 40'



Oil Pattern Distance:	40 Feet	Reverse Brush Drop:	40 Feet	Oil Per Board:	50 uL
Forward Oil Total:	15.1 mL	Reverse Oil Total:	8.2 mL	Volume Oil Total:	23.3 mL
Forward Boards Crossed:	302 Boards	Reverse Boards Crossed:	164 Boards	Total Boards Crossed:	466 Boards

	Start	Stop	Loads	Speed	Crossed	Start	End	Feet	T.Oil
1	2L	2R	4	18	148	0.0	10.0	10.0	7400
2	9L	9R	1	18	23	10.0	12.0	2.0	1150
3	10L	10R	2	18	42	12.0	17.0	5.0	2100
4	11L	11R	3	22	57	17.0	26.0	9.0	2850
5	12L	12R	1	22	17	26.0	29.0	3.0	850
6	13L	13R	1	22	15	29.0	32.0	3.0	750
7	2L	2R	0	22	0	32.0	40.0	8.0	0

	Start	Stop	Loads	Speed	Crossed	Start	End	Feet	T.Oil
1	2L	2R	0	26	0	40.0	28.0	-12.0	0
2	12L	12R	2	18	34	28.0	23.0	-5.0	1700
3	11L	11R	2	18	38	23.0	18.0	-5.0	1900
4	10L	10R	2	18	42	18.0	13.0	-5.0	2100
5	8L	8R	1	18	25	13.0	11.0	-2.0	1250
6	8L	8R	1	14	25	11.0	10.0	-1.0	1250
7	2L	2R	0	14	0	10.0	0.0	-10.0	0

Conditioner:
Type In or Select
One

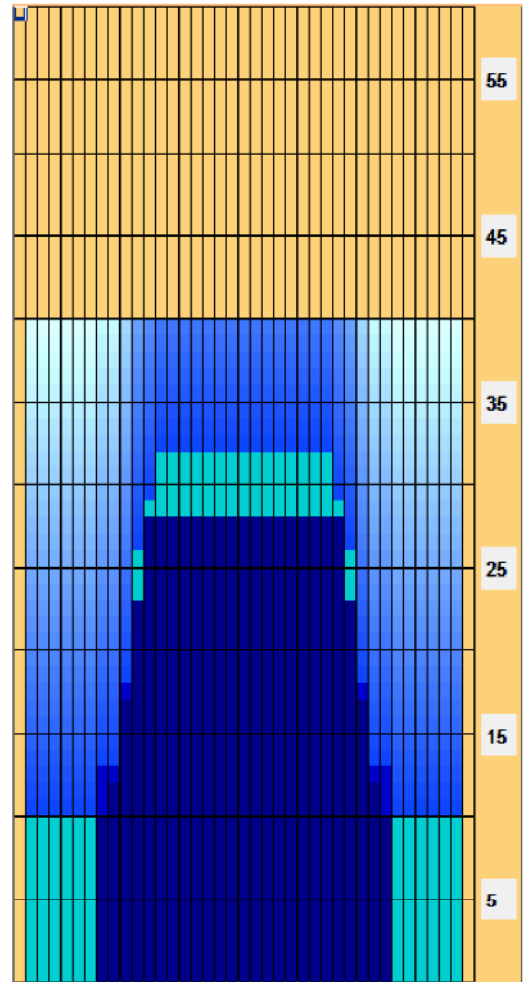
TransferType:
Type In or Select
One

Forward

Reverse

Combined

Buff



Program #1 is designed for use on GOOD LANE SURFACES, both synthetics and freshly resurfaced lanes. The pattern is good for all types of players.

Item	3L-7L:18L-18R	8L-12L:18L-18R	13L-17L:18L-18R	18L-18R:17R-13R	18L-18R:12R-8R	18L-18R:7R-3R
Description	Outside Track:Middle	Middle Track:Middle	Inside Track:Middle	Middle:Inside Track	Middle:Middle Track	Middle:Outside Track
Track Zone Ratio	5	1.69	1	1	1.69	5

